



Scenarios



Broad spectrum of printers



April 2018



Broad spectrum of printers



Main menu User: adminc1

Printer areas

Id.	Name
1	Area 1
2	Area de cocina 2

Printers

Name in system	Tickets	Range	Printer area	Divide per macrogroup	Pr. qualifiers	Pr. all whole command	Orders	Macrogroup
tck	✓	✗	Area 1	✗	✗	✓	✗	All
Epson-TM-T20II	✓	✗	Area 1	✗	✗	✗	✗	All
HP OfficeJet 6950 PCL-3 (Red)	✓	✓	Area 1	✓	✓	✓	✓	All

Conceptually you can have them:

- TCK printers, assigned to each POS, which will be where the TCK are printed.
- Area Printers, also known as KITCHEN printers, as this is where the PLATES to be cooked or the DRINKS to be served will usually be printed..
- Range Printers. Its function is to control the service areas of the different waiters, to know at all times what should be served to each TABLE, or, if you have to put cutlery, ...
- ORDER printers. Where they will print all the orders that they make to us, so much from Smartphone as telephonically.

Edit printer

Name in system:

Printer area:

Tickets:

Range:

Divide per macrogroup:

Pr. qualifiers:

Pr. all whole command:

Orders:

Macrogroup:



Broad spectrum of printers



Functioning Range Printers.

You must define in Printers that it is Range. If it is also a Ticket, you must put it twice in the corresponding Department (one as tickets and the other as Range).

Edit printer

Name in system: [Dropdown]

Printer area: Area 1 [Dropdown]

Tickets:

Range:

Divide per macrogroup:

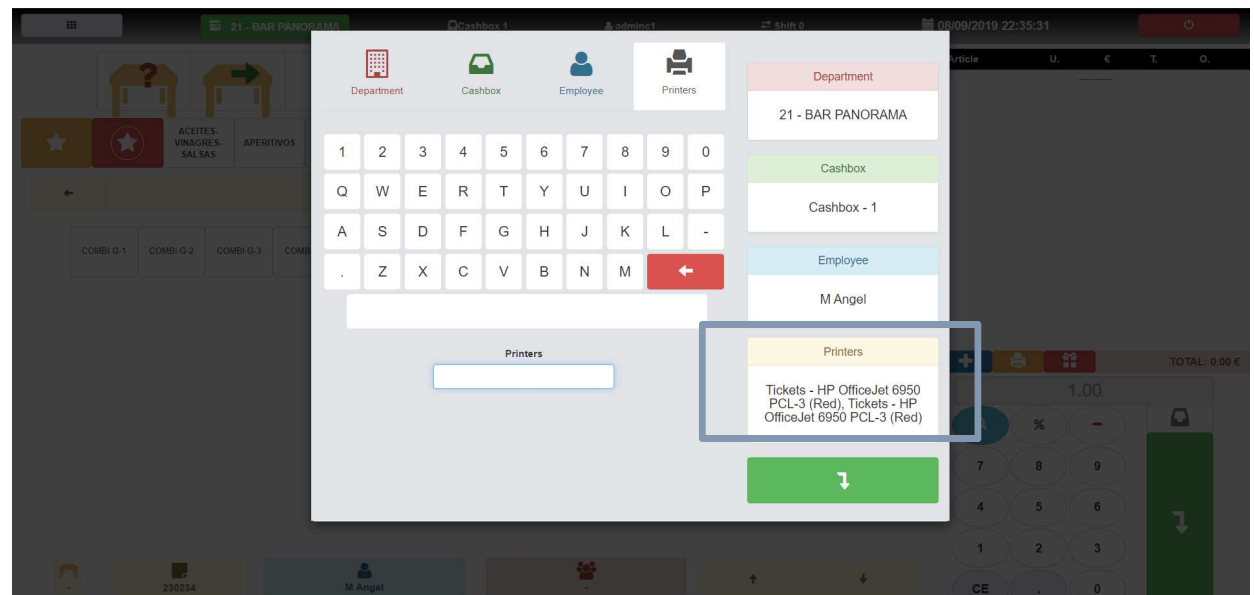
Pr. qualifiers:

Pr. all whole command:

Orders:

Macrogroup: [Dropdown menu with options: All, All, Food, Drink, Others]

The macro-group value of the printer defines which articles will be printed. Let's imagine that we have a printer of Range and we want that in that Range it only prints Beverages, it will print us only the drinks.





Broad spectrum of printers



Functioning Divide Macro-groups

If you enable the function of dividing Macro-groups, it will be printed where it corresponds, grouping the articles and separating them by a line by Macro-groups

Edit printer ✕

Name in system

Printer area

Tickets

Range

Divide per macrogroup

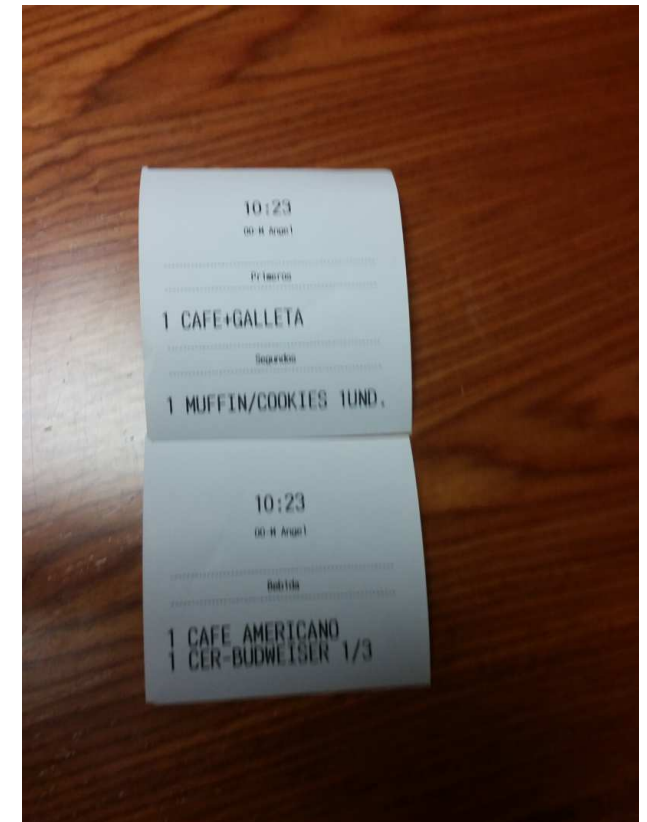
Pr. qualifiers

Pr. all whole command

Orders

Macrogroup
All
Food
Drink
Others

Will do in Ranges/Kitchen, if you have food and beverage items, will make two separate tickets





Broad spectrum of printers



Functioning Complet command.

When we use this option, we will print in the kitchen areas, always the full command, regardless of whether there are items that do not correspond to that area. Ads that do not correspond to that area will be printed in small print.

Edit printer [X]

Name in system []

Printer area [Area 1]

Tickets

Range

Divide per macrogroup

Pr. qualifiers

Pr. all whole command

Orders

Macrogroup [All]

- All
- All
- Food
- Drink
- Others





Broad spectrum of printers



Functioning Orders Printers

When we use the order option, indicating that it is an Order Printer, we will print all orders on that printer, plus the corresponding kitchen areas if any.

Edit printer ✕

Name in system

Printer area

Tickets

Range

Divide per macrogroup

Pr. qualifiers

Pr. all whole command

Orders

Macrogroup



Broad spectrum of printers



Functioning kitchen Printer

The Kitchen (Areas) printers are global to the system, the items to be printed on these printers will be assigned in the Price List.

Main menu / Prices List User: adminc1

i: Insert / m: Edit / d, supr: Delete

Code Dept.	Article	Dish	Description	+	Sale price 1	Sale price 2	Sale price 3
20	2300008	-	AGUA-SIN GAS/CON GAS 1/2	✗	1.80	1.80	1.80
20	2250007	-	APE-BANDEIRA/MADEIRA SUP	✗	3.25	2.45	2.45
20	2240009	-	APE-CAMPARI 70CC	✗	3.25	2.45	2.45
20	2250004	-	APE-DRY SACK 3/4L	✗	3.25	3.25	3.25
20	2240012	-	APE-FERNET BRANCA 3/4L	✗	3.25	2.45	2.45
20	2250005	-	APE-MALAGA VIRGEN 3/4L	✗	2.75	2.45	2.45
20	2250013	-	APE-MANZANILLA LA GUITA	✗	2.75	0.00	0.00
20	2240007	-	APE-MARTINI BLANCO 3/4 L	✗	3.25	2.45	2.45
20	2240006	-	APE-MARTINI DRY 3/4L	✗	3.25	2.45	2.45
20	2240008	-	APE-MARTINI ROJO 3/4L	✗	3.25	2.45	2.45
20	2240002	-	APE-PERNOD 1L	✗	3.50	3.50	3.50

Edit price

Code Dept. 20 Code 2250013

Description APE-MANZANILLA LA GUITA

Article Dish

Kitchen order

Printer area: Area de cocina 2

Sale price 1: 2.75

Sale price 2: 0.00

Sale price 3: 0.00

Short desc. LAGUITA

Change price

Not allow discount