



1.C.6. Previsión de Ocupación. Modelo C.N.

Mayo 2.016

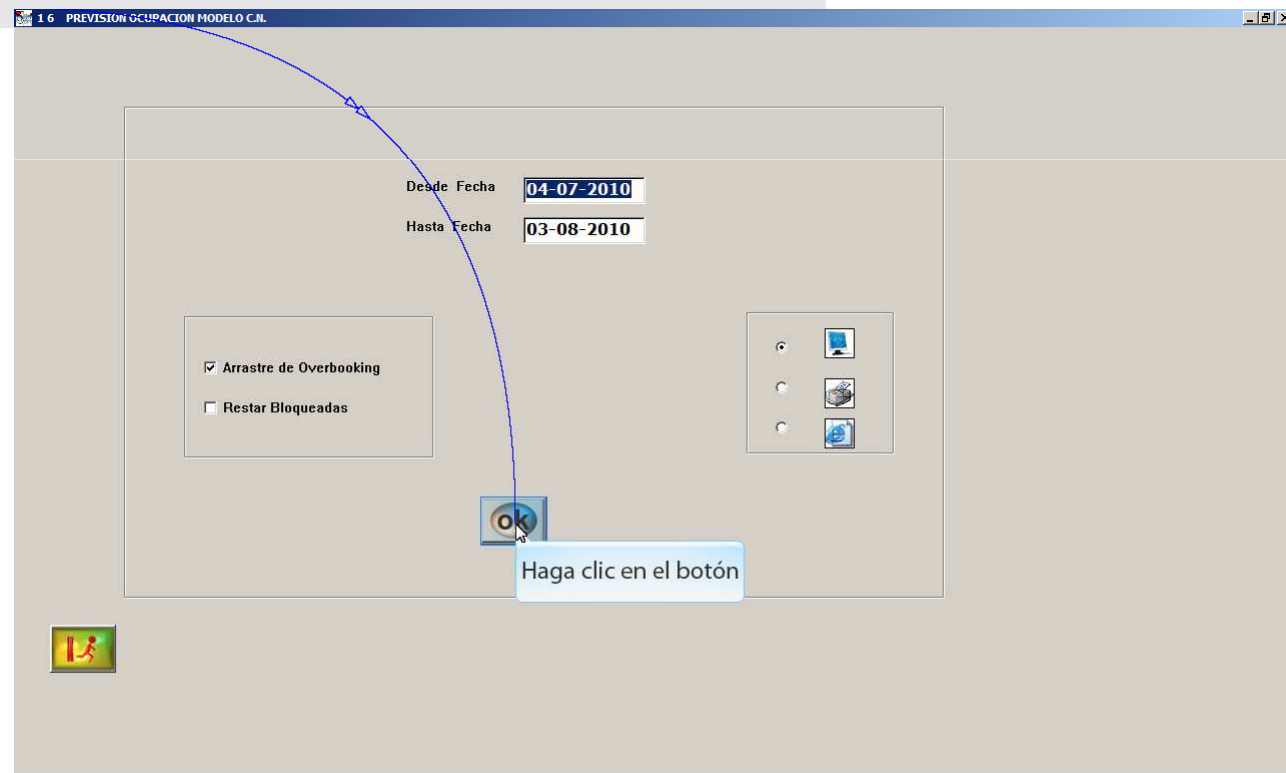
11 de Mayo de 2.016



Booking y Planning

.1.C.6. Previsión de Ocupación. Modelo C.N.

Informe que nos muestra el número de habitaciones ocupadas totales, por tipo, % de ocupación, disponibles, bloqueadas, las habitaciones que entran, salen, pax extra, menores, cunas, y regímenes.





Booking y Planning

.1.C.6. Previsión de Ocupación. Modelo C.N.

| | Fecha... | Habit | DD.. | ED.. | JS.. | SD.. | SM.. | EM.. | %Ocup.. | Disp. | BLOQ | Entr. | Sali. | Pax.. | Pext | Men1 | Men2 | Men3 | Cuna | AD.. |
|----|------------|-------|------|------|------|------|------|------|---------|-------|------|-------|-------|-------|------|------|------|------|------|------|
| 1 | 2010-07-04 | Dom | 57 | 3 | 39 | 2 | 11 | 1 | 38,51 | 91 | 0 | 16 | 12 | 98 | 0 | 2 | 1 | 0 | 3 | 1 |
| 2 | 2010-07-05 | Lun | 111 | 1 | 36 | 2 | 65 | 7 | 75,00 | 37 | 0 | 70 | 16 | 223 | 0 | 15 | 11 | 0 | 1 | 2 |
| 3 | 2010-07-06 | Mar | 130 | 1 | 36 | 2 | 84 | 7 | 87,84 | 18 | 0 | 38 | 19 | 265 | 0 | 18 | 13 | 0 | 1 | 2 |
| 4 | 2010-07-07 | Mie | 162 | 1 | 37 | 2 | 117 | 5 | 109,46 | -14 | 0 | 58 | 26 | 321 | 0 | 14 | 9 | 0 | 1 | 6 |
| 5 | 2010-07-08 | Jue | 113 | 1 | 33 | 2 | 67 | 10 | 76,35 | 35 | 0 | 36 | 85 | 219 | 0 | 11 | 7 | 0 | 1 | 2 |
| 6 | 2010-07-09 | Vie | 191 | 1 | 26 | 2 | 153 | 9 | 129,05 | -43 | 0 | 127 | 49 | 361 | 0 | 2 | 0 | 0 | 0 | 4 |
| 7 | 2010-07-10 | Sab | 168 | 1 | 112 | 3 | 50 | 2 | 113,51 | -20 | 0 | 103 | 126 | 312 | 0 | 5 | 3 | 0 | 0 | 2 |
| 8 | 2010-07-11 | Dom | 140 | 1 | 97 | 2 | 39 | 1 | 94,59 | 8 | 0 | 8 | 36 | 256 | 0 | 4 | 3 | 0 | 0 | 2 |
| 9 | 2010-07-12 | Lun | 119 | 1 | 99 | 2 | 16 | 1 | 80,41 | 29 | 0 | 11 | 32 | 221 | 0 | 8 | 7 | 0 | 0 | 2 |
| 10 | 2010-07-13 | Mar | 155 | 1 | 98 | 2 | 47 | 7 | 104,73 | -7 | 0 | 45 | 9 | 298 | 0 | 14 | 14 | 0 | 0 | 2 |
| 11 | 2010-07-14 | Mie | 123 | 1 | 34 | 2 | 71 | 15 | 83,11 | 25 | 0 | 41 | 73 | 251 | 0 | 19 | 15 | 0 | 0 | 2 |
| 12 | 2010-07-15 | Jue | 99 | 1 | 30 | 2 | 57 | 9 | 66,89 | 49 | 0 | 18 | 42 | 204 | 1 | 16 | 13 | 0 | 1 | 3 |
| 13 | 2010-07-16 | Vie | 87 | 1 | 34 | 2 | 49 | 1 | 58,78 | 61 | 0 | 31 | 43 | 201 | 2 | 23 | 17 | 0 | 1 | 3 |
| 14 | 2010-07-17 | Sab | 154 | 1 | 41 | 2 | 101 | 9 | 104,05 | -6 | 0 | 87 | 20 | 317 | 2 | 19 | 14 | 0 | 2 | 4 |
| 15 | 2010-07-18 | Dom | 151 | 1 | 40 | 2 | 99 | 9 | 102,03 | -3 | 0 | 31 | 34 | 304 | 0 | 15 | 12 | 0 | 1 | 4 |
| 16 | 2010-07-19 | Lun | 104 | 1 | 41 | 2 | 59 | 1 | 70,27 | 44 | 0 | 34 | 81 | 225 | 0 | 17 | 15 | 0 | 0 | 3 |
| 17 | 2010-07-20 | Mar | 142 | 1 | 46 | 2 | 88 | 5 | 95,95 | 6 | 0 | 49 | 11 | 304 | 0 | 22 | 18 | 0 | 0 | 3 |
| 18 | 2010-07-21 | Mie | 135 | 1 | 48 | 2 | 79 | 5 | 95,95 | 6 | 0 | 49 | 11 | 304 | 0 | 22 | 18 | 0 | 0 | 3 |
| 19 | 2010-07-22 | Jue | 130 | 1 | 44 | 2 | 81 | 2 | 95,95 | 6 | 0 | 49 | 11 | 304 | 0 | 22 | 18 | 0 | 0 | 3 |
| 20 | 2010-07-23 | Vie | 132 | 1 | 47 | 2 | 80 | 2 | 95,95 | 6 | 0 | 49 | 11 | 304 | 0 | 22 | 18 | 0 | 0 | 3 |
| 21 | 2010-07-24 | Sab | 178 | 1 | 51 | 3 | 116 | 6 | 116,67 | 14 | 0 | 11 | 11 | 304 | 0 | 11 | 7 | 0 | 1 | 7 |
| 22 | 2010-07-25 | Dom | 167 | 1 | 45 | 2 | 105 | 14 | 116,67 | 14 | 0 | 11 | 11 | 304 | 0 | 11 | 7 | 0 | 0 | 6 |
| 23 | 2010-07-26 | Lun | 143 | 1 | 41 | 4 | 83 | 14 | 116,67 | 14 | 0 | 11 | 11 | 304 | 0 | 11 | 15 | 0 | 0 | 5 |
| 24 | 2010-07-27 | Mar | 114 | 0 | 14 | 5 | 94 | 1 | 77,03 | 34 | 0 | 63 | 92 | 229 | 0 | 23 | 17 | 1 | 0 | 6 |
| 25 | 2010-07-28 | Mie | 98 | 0 | 19 | 2 | 76 | 1 | 66,22 | 50 | 0 | 31 | 47 | 246 | 0 | 32 | 24 | 1 | 2 | 3 |
| 26 | 2010-07-29 | Jue | 59 | 0 | 16 | 0 | 41 | 2 | 39,86 | 89 | 0 | 18 | 57 | 150 | 1 | 20 | 17 | 0 | 0 | 3 |
| 27 | 2010-07-30 | Vie | 59 | 0 | 11 | 0 | 45 | 3 | 39,86 | 89 | 0 | 30 | 30 | 150 | 0 | 20 | 16 | 0 | 1 | 3 |
| 28 | 2010-07-31 | Sab | 82 | 0 | 8 | 0 | 66 | 8 | 55,41 | 66 | 0 | 52 | 29 | 184 | 0 | 16 | 12 | 0 | 1 | 1 |
| 29 | 2010-08-01 | Dom | 59 | 0 | 9 | 0 | 42 | 8 | 39,86 | 89 | 0 | 10 | 33 | 130 | 0 | 12 | 8 | 0 | 0 | |
| 30 | 2010-08-02 | Lun | 29 | 0 | 7 | 0 | 22 | 0 | 19,59 | 119 | 0 | 10 | 40 | 76 | 0 | 10 | 7 | 0 | 2 | 1 |
| 31 | 2010-08-03 | Mar | 55 | 0 | 6 | 0 | 49 | 0 | 37,16 | 93 | 0 | 31 | 5 | 134 | 0 | 13 | 9 | 0 | 2 | 1 |
| 32 | TOTALES: | | 3646 | 25 | 1245 | 57 | 2152 | 165 | 79,47 | 942 | 0 | 1344 | 1342 | 7461 | 6 | 453 | 350 | 2 | 21 | 103 |

Tipos de Habitación que posee el Hotel

Booking y Planning



.1.C.6. Previsión de Ocupación. Modelo C.N.

| 1 6 PREVISION OCUPACION MODELO C.N. | | | | | | | | | | | | | | | | | | | | |
|-------------------------------------|------------|-------|------|------|------|------|------|------|--------|-------|------|-------|------|-------|------|------|------|------|------|------|
| | Fecha... | Habit | DD.. | ED.. | JS.. | SD.. | SM.. | EM.. | %Ocup. | Disp. | BLOQ | Entr. | Sal. | Pax.. | Pext | Men1 | Men2 | Men3 | Cuna | AD.. |
| 1 | 2010-07-04 | Dom | 57 | 3 | 39 | 2 | 11 | 1 | 38,51 | 91 | 0 | 16 | 12 | 98 | 0 | 2 | 1 | 0 | 3 | 1 |
| 2 | 2010-07-05 | Lun | 111 | 1 | 36 | 2 | 65 | 7 | 75,00 | 37 | 0 | 70 | 16 | 223 | 0 | 15 | 11 | 0 | 1 | 2 |
| 3 | 2010-07-06 | Mar | 130 | 1 | 36 | 2 | 84 | 7 | 87,84 | 18 | 0 | 38 | 19 | 265 | 0 | 18 | 13 | 0 | 1 | 2 |
| 4 | 2010-07-07 | Mie | 162 | 1 | 37 | 2 | 117 | 5 | 109,46 | -14 | 0 | 58 | 26 | 321 | 0 | 14 | 9 | 0 | 1 | 6 |
| 5 | 2010-07-08 | Jue | 113 | 1 | 33 | 2 | 67 | 10 | 76,35 | 35 | 0 | 36 | 85 | 219 | 0 | 11 | 7 | 0 | 1 | 2 |
| 6 | 2010-07-09 | Vie | 191 | 1 | 26 | 2 | 153 | 9 | 129,05 | -43 | 0 | 127 | 49 | 361 | 0 | 2 | 0 | 0 | 0 | 4 |
| 7 | 2010-07-10 | Sab | 168 | 1 | 112 | 3 | 50 | 2 | 113,51 | -20 | 0 | 103 | 126 | 312 | 0 | 5 | 3 | 0 | 0 | 2 |
| 8 | 2010-07-11 | Dom | 140 | 1 | 97 | 2 | 39 | 1 | 94,59 | 8 | 0 | 8 | 36 | 256 | 0 | 4 | 3 | 0 | 0 | 2 |
| 9 | 2010-07-12 | Lun | 119 | 1 | 99 | 2 | 16 | 1 | 80,41 | 29 | 0 | 11 | 32 | 221 | 0 | 8 | 7 | 0 | 0 | 2 |
| 10 | 2010-07-13 | Mar | 155 | 1 | 98 | 2 | 47 | 7 | 104,73 | -7 | 0 | 45 | 9 | 298 | 0 | 14 | 14 | 0 | 0 | 2 |
| 11 | 2010-07-14 | Mie | 123 | 1 | 34 | 2 | 71 | 15 | 83,11 | 25 | 0 | 41 | 73 | 251 | 0 | 19 | 15 | 0 | 0 | 2 |
| 12 | 2010-07-15 | Jue | 99 | 1 | 30 | 2 | 57 | 9 | 66,89 | 49 | 0 | 18 | 42 | 204 | 1 | 16 | 13 | 0 | 1 | 3 |
| 13 | 2010-07-16 | Vie | 87 | 1 | 34 | 2 | 49 | 1 | 58,78 | 61 | 0 | 31 | 43 | 201 | 2 | 23 | 17 | 0 | 1 | 3 |
| 14 | 2010-07-17 | Sab | 154 | 1 | 41 | 2 | 101 | 9 | 104,05 | -6 | 0 | 87 | 20 | 317 | 2 | 19 | 14 | 0 | 2 | 4 |
| 15 | 2010-07-18 | Dom | 151 | 1 | 40 | 2 | 99 | 9 | 102,03 | -3 | 0 | 31 | 34 | 304 | 0 | 15 | 12 | 0 | 1 | 4 |
| 16 | 2010-07-19 | Lun | 104 | 1 | 41 | 2 | 59 | 1 | 70,27 | 44 | 0 | 34 | 81 | 225 | 0 | 17 | 15 | 0 | 0 | 3 |
| 17 | 2010-07-20 | Mar | 142 | 1 | 46 | 2 | 88 | 5 | 95,95 | 6 | 0 | 49 | 11 | 304 | 0 | 22 | 18 | 0 | 0 | 3 |
| 18 | 2010-07-21 | Mie | 135 | 1 | 48 | 2 | 79 | 5 | 91,22 | 13 | 0 | 39 | 46 | 287 | 0 | 19 | 17 | 0 | 0 | 2 |
| 19 | 2010-07-22 | Jue | 130 | 1 | 44 | 2 | 81 | 2 | 87,69 | 13 | 0 | 87 | 11 | 287 | 0 | 15 | 14 | 0 | 0 | 2 |
| 20 | 2010-07-23 | Vie | 132 | 1 | 47 | 2 | 80 | 2 | 89,39 | 13 | 0 | 89 | 11 | 287 | 0 | 12 | 9 | 0 | 0 | 3 |
| 21 | 2010-07-24 | Sab | 178 | 1 | 51 | 3 | 116 | 6 | 120,00 | 13 | 0 | 120 | 11 | 328 | 0 | 11 | 7 | 0 | 1 | 7 |
| 22 | 2010-07-25 | Dom | 167 | 1 | 45 | 2 | 105 | 14 | 112,84 | -19 | 0 | 36 | 47 | 328 | 0 | 8 | 6 | 0 | 0 | 6 |
| 23 | 2010-07-26 | Lun | 143 | 1 | 41 | 4 | 83 | 14 | 96,62 | 5 | 0 | 43 | 67 | 283 | 0 | 18 | 15 | 0 | 0 | 5 |
| 24 | 2010-07-27 | Mar | 114 | 0 | 14 | 5 | 94 | 1 | 77,03 | 34 | 0 | 63 | 92 | 229 | 0 | 23 | 17 | 1 | 0 | 6 |
| 25 | 2010-07-28 | Mie | 98 | 0 | 19 | 2 | 76 | 1 | 66,22 | 50 | 0 | 31 | 47 | 246 | 0 | 32 | 24 | 1 | 2 | 3 |
| 26 | 2010-07-29 | Jue | 59 | 0 | 16 | 0 | 41 | 2 | 39,86 | 89 | 0 | 18 | 57 | 150 | 1 | 20 | 17 | 0 | 0 | 3 |
| 27 | 2010-07-30 | Vie | 59 | 0 | 11 | 0 | 45 | 3 | 39,86 | 89 | 0 | 30 | 30 | 150 | 0 | 20 | 16 | 0 | 1 | 3 |
| 28 | 2010-07-31 | Sab | 82 | 0 | 8 | 0 | 66 | 8 | 55,41 | 66 | 0 | 52 | 29 | 184 | 0 | 16 | 12 | 0 | 1 | 1 |
| 29 | 2010-08-01 | Dom | 59 | 0 | 9 | 0 | 42 | 8 | 39,86 | 89 | 0 | 10 | 33 | 130 | 0 | 12 | 8 | 0 | 0 | 1 |
| 30 | 2010-08-02 | Lun | 29 | 0 | 7 | 0 | 22 | 0 | 19,59 | 119 | 0 | 10 | 40 | 76 | 0 | 10 | 7 | 0 | 2 | 1 |
| 31 | 2010-08-03 | Mar | 55 | 0 | 6 | 0 | 49 | 0 | 37,16 | 93 | 0 | 31 | 5 | 134 | 0 | 13 | 9 | 0 | 2 | 1 |
| 32 | TOTALES: | | 3646 | 25 | 1245 | 57 | 2152 | 165 | 79,47 | 942 | 0 | 1344 | 1342 | 7461 | 6 | 453 | 350 | 2 | 21 | 103 |

Personas Extras, Menores y Cunas



Booking y Planning

.1.C.6. Previsión de Ocupación. Modelo C.N.

| 1 6 PREVISION OCUPACION MODELO C.N. | | | | | | | | | | | | | | | | | | | | |
|-------------------------------------|------------|-------|------|------|------|------|------|------|--------|-------|------|-------|-------|-------|------|------|------|------|------|------|
| | Fecha... | Habit | DD.. | ED.. | JS.. | SD.. | SM.. | EM.. | %Ocup. | Disp. | BLOQ | Entr. | Sali. | Pax.. | Pext | Men1 | Men2 | Men3 | Cuna | AD.. |
| 1 | 2010-07-04 | Dom | 57 | 3 | 39 | 2 | 11 | 1 | 38,51 | 91 | 0 | 16 | 12 | 98 | 0 | 2 | 1 | 0 | 3 | 1 |
| 2 | 2010-07-05 | Lun | 111 | 1 | 36 | 2 | 65 | 7 | 75,00 | 37 | 0 | 70 | 16 | 223 | 0 | 15 | 11 | 0 | 1 | 2 |
| 3 | 2010-07-06 | Mar | 130 | 1 | 36 | 2 | 84 | 7 | 87,84 | 18 | 0 | 38 | 19 | 265 | 0 | 18 | 13 | 0 | 1 | 2 |
| 4 | 2010-07-07 | Mie | 162 | 1 | 37 | 2 | 117 | 5 | 109,46 | -14 | 0 | 58 | 26 | 321 | 0 | 14 | 9 | 0 | 1 | 6 |
| 5 | 2010-07-08 | Jue | 113 | 1 | 33 | 2 | 67 | 10 | 76,35 | 35 | 0 | 36 | 85 | 219 | 0 | 11 | 7 | 0 | 1 | 2 |
| 6 | 2010-07-09 | Vie | 191 | 1 | 26 | 2 | 153 | 9 | 129,05 | -43 | 0 | 127 | 49 | 361 | 0 | 2 | 0 | 0 | 0 | 4 |
| 7 | 2010-07-10 | Sab | 168 | 1 | 112 | 3 | 50 | 2 | 113,51 | -20 | 0 | 103 | 126 | 312 | 0 | 5 | 3 | 0 | 0 | 2 |
| 8 | 2010-07-11 | Dom | 140 | 1 | 97 | 2 | 39 | 1 | 94,59 | 8 | 0 | 8 | 36 | 256 | 0 | 4 | 3 | 0 | 0 | 2 |
| 9 | 2010-07-12 | Lun | 119 | 1 | 99 | 2 | 16 | 1 | 80,41 | 29 | 0 | 11 | 32 | 221 | 0 | 8 | 7 | 0 | 0 | 2 |
| 10 | 2010-07-13 | Mar | 155 | 1 | 98 | 2 | 47 | 7 | 104,73 | -7 | 0 | 45 | 9 | 298 | 0 | 14 | 14 | 0 | 0 | 2 |
| 11 | 2010-07-14 | Mie | 123 | 1 | 34 | 2 | 71 | 15 | 83,11 | 25 | 0 | 41 | 73 | 251 | 0 | 19 | 15 | 0 | 0 | 2 |
| 12 | 2010-07-15 | Jue | 99 | 1 | 30 | 2 | 57 | 9 | 66,89 | 49 | 0 | 18 | 42 | 204 | 1 | 16 | 13 | 0 | 1 | 3 |
| 13 | 2010-07-16 | Vie | 87 | 1 | 34 | 2 | 49 | 1 | 58,78 | 61 | 0 | 31 | 43 | 201 | 2 | 23 | 17 | 0 | 1 | 3 |
| 14 | 2010-07-17 | Sab | 154 | 1 | 41 | 2 | 101 | 9 | 104,05 | -6 | 0 | 87 | 20 | 317 | 2 | 19 | 14 | 0 | 2 | 4 |
| 15 | 2010-07-18 | Dom | 151 | 1 | 40 | 2 | 99 | 9 | 102,03 | -3 | 0 | 31 | 34 | 304 | 0 | 15 | 12 | 0 | 1 | 4 |
| 16 | 2010-07-19 | Lun | 104 | 1 | 41 | 2 | 59 | 1 | 70,27 | 44 | 0 | 34 | 81 | 225 | 0 | 17 | 15 | 0 | 0 | 3 |
| 17 | 2010-07-20 | Mar | 142 | 1 | 46 | 2 | 88 | 5 | 95,95 | 6 | 0 | 49 | 11 | 304 | 0 | 22 | 18 | 0 | 0 | 3 |
| 18 | 2010-07-21 | Mie | 135 | 1 | 48 | 2 | 79 | 5 | 91,22 | 13 | 0 | 39 | 46 | 287 | 0 | 19 | 17 | 0 | 0 | 2 |
| 19 | 2010-07-22 | Jue | 130 | 1 | 44 | 2 | 81 | 2 | 87,84 | 18 | 0 | 41 | 46 | 273 | 0 | 15 | 14 | 0 | 0 | 2 |
| 20 | 2010-07-23 | Vie | 132 | 1 | 47 | 2 | 80 | 2 | 89,19 | 16 | 0 | 74 | 72 | 263 | 0 | 12 | 9 | 0 | 0 | 3 |
| 21 | 2010-07-24 | Sab | 178 | 1 | 51 | 3 | 116 | 6 | 120,27 | -30 | 0 | 63 | 17 | 348 | 0 | 11 | 7 | 0 | 1 | 7 |
| 22 | 2010-07-25 | Dom | 167 | 1 | 45 | 2 | 105 | 14 | 112,84 | -19 | 0 | 36 | 47 | 328 | 0 | 8 | 6 | 0 | 0 | 6 |
| 23 | 2010-07-26 | Lun | 143 | 1 | 41 | 4 | 83 | 14 | 96,62 | 5 | 0 | 43 | 67 | 283 | 0 | 18 | 15 | 0 | 0 | 5 |
| 24 | 2010-07-27 | Mar | 114 | 0 | 14 | 5 | 94 | 1 | 77,03 | 34 | 0 | 63 | 92 | 229 | 0 | 23 | 17 | 1 | 0 | 6 |
| 25 | 2010-07-28 | Mie | 98 | 0 | 19 | 2 | 76 | 1 | 66,22 | 50 | 0 | 31 | 47 | 246 | 0 | 32 | 24 | 1 | 2 | 3 |
| 26 | 2010-07-29 | Jue | 59 | 0 | 16 | 0 | 41 | 2 | 39,86 | 89 | 0 | 18 | 57 | 150 | 1 | 20 | 17 | 0 | 0 | 3 |
| 27 | 2010-07-30 | Vie | 59 | 0 | 11 | 0 | 45 | 3 | 39,86 | 89 | 0 | 30 | 30 | 150 | 0 | 20 | 16 | 0 | 1 | 3 |
| 28 | 2010-07-31 | Sab | 82 | 0 | 8 | 0 | 66 | 8 | 55,41 | 66 | 0 | 52 | 29 | 184 | 0 | 16 | 12 | 0 | 1 | 1 |
| 29 | 2010-08-01 | Dom | 59 | 0 | 9 | 0 | 42 | 8 | 39,86 | 89 | 0 | 10 | 33 | 130 | 0 | 12 | 8 | 0 | 0 | |
| 30 | 2010-08-02 | Lun | 29 | 0 | 7 | 0 | 22 | 0 | 19,59 | 119 | 0 | 10 | 40 | 76 | 0 | 10 | 7 | 0 | 2 | 1 |
| 31 | 2010-08-03 | Mar | 55 | 0 | 6 | 0 | 49 | 0 | 37,16 | 93 | 0 | 31 | 5 | 134 | 0 | 13 | 9 | 0 | 2 | 1 |
| 32 | TOTALES: | | 3646 | 25 | 1245 | 57 | 2152 | 165 | 79,47 | 942 | 0 | 1344 | 1342 | 7461 | 6 | 453 | 350 | 2 | 21 | 103 |

Booking y Planning

.1.C.6. Previsión de Ocupación. Modelo C.N.

1 6 PREVISION OCUPACION MODELO C.N.

| | ED.. | JS.. | SD.. | SM.. | EM.. | %Ocup.. | Disp. | BLOQ. | Entr.. | Sali. | Pax.. | Pext. | Men1 | Men2 | Men3 | Cuna | AD.. | ALLI | H... | MA.. | MC.. |
|----|------|------|------|------|------|---------|-------|-------|--------|-------|-------|-------|------|------|------|------|------|------|------|------|------|
| 1 | 39 | 2 | 11 | 1 | 1 | 38,51 | 91 | 0 | 16 | 12 | 98 | 0 | 2 | 1 | 0 | 3 | 18 | 0 | 60 | 0 | 14 |
| 2 | 36 | 2 | 65 | 7 | 0 | 75,00 | 37 | 0 | 70 | 16 | 223 | 0 | 15 | 11 | 0 | 1 | 21 | 0 | 115 | 0 | 83 |
| 3 | 36 | 2 | 84 | 7 | 0 | 87,84 | 18 | 0 | 38 | 19 | 265 | 0 | 18 | 13 | 0 | 1 | 22 | 0 | 122 | 0 | 117 |
| 4 | 37 | 2 | 117 | 5 | 0 | 109,46 | -14 | 0 | 58 | 26 | 321 | 0 | 14 | 9 | 0 | 1 | 64 | 0 | 103 | 0 | 150 |
| 5 | 33 | 2 | 67 | 10 | 0 | 76,35 | 35 | 0 | 36 | 85 | 219 | 0 | 11 | 7 | 0 | 1 | 22 | 0 | 81 | 0 | 112 |
| 6 | 26 | 2 | 153 | 9 | 0 | 129,05 | -43 | 0 | 127 | 49 | 361 | 0 | 2 | 0 | 0 | 0 | 48 | 0 | 191 | 0 | 118 |
| 7 | 112 | 3 | 50 | 2 | 0 | 113,51 | -20 | 0 | 103 | 126 | 312 | 0 | 5 | 3 | 0 | 0 | 24 | 0 | 68 | 0 | 216 |
| 8 | 97 | 2 | 39 | 1 | 0 | 94,59 | 8 | 0 | 8 | 36 | 256 | 0 | 4 | 3 | 0 | 0 | 22 | 0 | 51 | 0 | 179 |
| 9 | 99 | 2 | 16 | 1 | 0 | 80,41 | 28 | 0 | 11 | 32 | 221 | 0 | 8 | 7 | 0 | 0 | 23 | 0 | 71 | 0 | 123 |
| 10 | 98 | 2 | 47 | 7 | 0 | 104,73 | -7 | 0 | 45 | 9 | 298 | 0 | 14 | 14 | 0 | 0 | 21 | 0 | 101 | 0 | 172 |
| 11 | 34 | 2 | 71 | 15 | 0 | 83,11 | 25 | 0 | 41 | 73 | 251 | 0 | 19 | 15 | 0 | 0 | 26 | 0 | 110 | 0 | 111 |
| 12 | 30 | 2 | 57 | 9 | 0 | 66,89 | 49 | 0 | 18 | 42 | 204 | 1 | 16 | 13 | 0 | 1 | 32 | 0 | 106 | 0 | 62 |
| 13 | 34 | 2 | 49 | 1 | 0 | 58,78 | 61 | 0 | 31 | 43 | 201 | 2 | 23 | 17 | 0 | 1 | 39 | 0 | 148 | 0 | 10 |
| 14 | 41 | 2 | 101 | 9 | 0 | 104,05 | -6 | 0 | 87 | 20 | 317 | 2 | 19 | 14 | 0 | 2 | 46 | 0 | 149 | 0 | 118 |
| 15 | 40 | 2 | 99 | 9 | 0 | 102,03 | -3 | 0 | 31 | 34 | 304 | 0 | 15 | 12 | 0 | 1 | 40 | 0 | 142 | 0 | 118 |
| 16 | 41 | 2 | 59 | 1 | 0 | 70,27 | 44 | 0 | 34 | 81 | 225 | 0 | 17 | 15 | 0 | 0 | 37 | 0 | 138 | 0 | 46 |
| 17 | 46 | 2 | 88 | 5 | 0 | 95,95 | 6 | 0 | 49 | 11 | 304 | 0 | 22 | 18 | 0 | 0 | 35 | 0 | 164 | 0 | 101 |
| 18 | 48 | 2 | 79 | 5 | 0 | 91,22 | 13 | 0 | 39 | 46 | 287 | 0 | 19 | 17 | 0 | 0 | 28 | 0 | 140 | 0 | 65 |
| 19 | 44 | 2 | 81 | 2 | 0 | 87,84 | 18 | 0 | 41 | 46 | 273 | 0 | 15 | 14 | 0 | 0 | 22 | 0 | 131 | 0 | 66 |
| 20 | 47 | 2 | 80 | 2 | 0 | 89,19 | 16 | 0 | 74 | 72 | 263 | 0 | 12 | 9 | 0 | 0 | 32 | 0 | 139 | 0 | 20 |
| 21 | 51 | 3 | 116 | 6 | 1 | 120,27 | -30 | 0 | 63 | 17 | 348 | 0 | 11 | 7 | 0 | 1 | 72 | 0 | 151 | 0 | 51 |
| 22 | 45 | 2 | 105 | 14 | 0 | 112,84 | -19 | 0 | 36 | 47 | 328 | 0 | 8 | 6 | 0 | 0 | 62 | 0 | 93 | 0 | 41 |
| 23 | 41 | 4 | 83 | 14 | 0 | 96,62 | 5 | 0 | 43 | 67 | 283 | 0 | 18 | 15 | 0 | 0 | 55 | 0 | 123 | 0 | 41 |
| 24 | 14 | 5 | 94 | 1 | 0 | 77,03 | 34 | 0 | 63 | 92 | 229 | 0 | 23 | 17 | 1 | 0 | 63 | 0 | 108 | 0 | 54 |
| 25 | 19 | 2 | 76 | 1 | 0 | 66,22 | 50 | 0 | 31 | 47 | 246 | 0 | 32 | 24 | 1 | 2 | 36 | 0 | 152 | 0 | 54 |
| 26 | 16 | 0 | 41 | 2 | 0 | 39,86 | 89 | 0 | 18 | 57 | 150 | 1 | 20 | 17 | 0 | 0 | 34 | 0 | 112 | 0 | 0 |
| 27 | 11 | 0 | 45 | 3 | 0 | 39,86 | 89 | 0 | 30 | 30 | 150 | 0 | 20 | 16 | 0 | 1 | 39 | 0 | 107 | 0 | 0 |
| 28 | 8 | 0 | 66 | 8 | 0 | 55,41 | 66 | 0 | 52 | 29 | 184 | 0 | 16 | 12 | 0 | 1 | 19 | 0 | 109 | 0 | 52 |
| 29 | 9 | 0 | 42 | 8 | 0 | 39,86 | 89 | 0 | 10 | 33 | 130 | 0 | 12 | 8 | 0 | 0 | 8 | 0 | 66 | 0 | 52 |
| 30 | 7 | 0 | 22 | 0 | 0 | 19,59 | 119 | 0 | 10 | 40 | 76 | 0 | 10 | 7 | 0 | 2 | 10 | 0 | 62 | 0 | 0 |
| 31 | 6 | 0 | 49 | 0 | 0 | 37,16 | 93 | 0 | 31 | 5 | 134 | 0 | 13 | 9 | 0 | 2 | 18 | 0 | 62 | 0 | 50 |
| 32 | 1245 | 57 | 2152 | 165 | 2 | 79,47 | 942 | 0 | 1344 | | | | | | 2 | 21 | 1038 | 0 | 3475 | 0 | 2396 |

Haga clic en el botón

Booking y Planning



.1.C.6. Previsión de Ocupación. Modelo C.N.

| 1 6 PREVISION OCUPACION MODELO C.N. | | | | | | | | | | | | | | | | | | | | | |
|-------------------------------------|------|------|------|------|------|--------|-------|------|-------|-------|-------|------|------|------|------|------|------|------|------|------|------|
| | ED.. | JS.. | SD.. | SM.. | EM.. | %Ocup. | Disp. | BLOG | Entr. | Sali. | Pax.. | Pext | Men1 | Men2 | Men3 | Cuna | AD.. | ALLI | H... | MA.. | MC.. |
| 1 | 39 | 2 | 11 | 1 | 1 | 38,51 | 91 | 0 | 16 | 12 | 98 | 0 | 2 | 1 | 0 | 3 | 18 | 0 | 60 | 0 | 14 |
| 2 | 36 | 2 | 65 | 7 | 0 | 75,00 | 37 | 0 | 70 | 16 | 223 | 0 | 15 | 11 | 0 | 1 | 21 | 0 | 115 | 0 | 83 |
| 3 | 36 | 2 | 84 | 7 | 0 | 87,84 | 18 | 0 | 38 | 19 | 265 | 0 | 18 | 13 | 0 | 1 | 22 | 0 | 122 | 0 | 117 |
| 4 | 37 | 2 | 117 | 5 | 0 | 109,46 | -14 | 0 | 58 | 26 | 321 | 0 | 14 | 9 | 0 | 1 | 64 | 0 | 103 | 0 | 150 |
| 5 | 33 | 2 | 67 | 10 | 0 | 76,35 | 35 | 0 | 36 | 85 | 219 | 0 | 11 | 7 | 0 | 1 | 22 | 0 | 81 | 0 | 112 |
| 6 | 26 | 2 | 153 | 9 | 0 | 129,05 | -43 | 0 | 127 | 49 | 361 | 0 | 2 | 0 | 0 | 0 | 48 | 0 | 191 | 0 | 118 |
| 7 | 112 | 3 | 50 | 2 | 0 | 113,51 | -20 | 0 | 103 | 126 | 312 | 0 | 5 | 3 | 0 | 0 | 24 | 0 | 68 | 0 | 216 |
| 8 | 97 | 2 | 39 | 1 | 0 | 94,59 | 8 | 0 | 8 | 36 | 256 | 0 | 4 | 3 | 0 | 0 | 22 | 0 | 51 | 0 | 179 |
| 9 | 99 | 2 | 16 | 1 | 0 | 80,41 | 29 | 0 | 11 | 32 | 221 | 0 | 8 | 7 | 0 | 0 | 23 | 0 | 71 | 0 | 123 |
| 10 | 98 | 2 | 47 | 7 | 0 | 104,73 | -7 | 0 | 45 | 9 | 298 | 0 | 14 | 14 | 0 | 0 | 21 | 0 | 101 | 0 | 172 |
| 11 | 34 | 2 | 71 | 15 | 0 | 83,11 | 25 | 0 | 41 | 73 | 251 | 0 | 19 | 15 | 0 | 0 | 26 | 0 | 110 | 0 | 111 |
| 12 | 30 | 2 | 57 | 9 | 0 | 66,89 | 49 | 0 | 18 | 42 | 204 | 1 | 16 | 13 | 0 | 1 | 32 | 0 | 106 | 0 | 62 |
| 13 | 34 | 2 | 49 | 1 | 0 | 58,78 | 61 | 0 | 31 | 43 | 201 | 2 | 23 | 17 | 0 | 1 | 39 | 0 | 148 | 0 | 10 |
| 14 | 41 | 2 | 101 | 9 | 0 | 104,05 | -6 | 0 | 87 | 20 | 317 | 2 | 19 | 14 | 0 | 2 | 46 | 0 | 149 | 0 | 118 |
| 15 | 40 | 2 | 99 | 9 | 0 | 102,03 | -3 | 0 | 31 | 34 | 304 | 0 | 15 | 12 | 0 | 1 | 40 | 0 | 142 | 0 | 118 |
| 16 | 41 | 2 | 59 | 1 | 0 | 70,27 | 44 | 0 | 34 | 81 | 225 | 0 | 17 | 15 | 0 | 0 | 37 | 0 | 138 | 0 | 46 |
| 17 | 46 | 2 | 88 | 5 | 0 | 95,95 | 6 | 0 | 49 | 11 | 304 | 0 | 22 | 18 | 0 | 0 | 35 | 0 | 164 | 0 | 101 |
| 18 | 48 | 2 | 79 | 5 | 0 | 91,22 | 13 | 0 | 39 | 46 | 287 | 0 | 0 | 0 | 0 | 0 | 28 | 0 | 140 | 0 | 65 |
| 19 | 44 | 2 | 81 | 2 | 0 | 87,84 | 18 | 0 | 41 | 46 | 273 | 0 | 0 | 0 | 0 | 0 | 22 | 0 | 131 | 0 | 66 |
| 20 | 47 | 2 | 80 | 2 | 0 | 89,19 | 16 | 0 | 74 | 72 | 263 | 0 | 0 | 0 | 0 | 0 | 32 | 0 | 139 | 0 | 20 |
| 21 | 51 | 3 | 116 | 6 | 1 | 120,27 | -30 | 0 | 63 | 17 | 348 | 0 | 11 | 7 | 0 | 1 | 72 | 0 | 151 | 0 | 51 |
| 22 | 45 | 2 | 105 | 14 | 0 | 112,84 | -19 | 0 | 36 | 47 | 328 | 0 | 8 | 6 | 0 | 0 | 62 | 0 | 93 | 0 | 41 |
| 23 | 41 | 4 | 83 | 14 | 0 | 96,62 | 5 | 0 | 43 | 67 | 283 | 0 | 18 | 15 | 0 | 0 | 55 | 0 | 123 | 0 | 41 |
| 24 | 14 | 5 | 94 | 1 | 0 | 77,03 | 34 | 0 | 63 | 92 | 229 | 0 | 23 | 17 | 1 | 0 | 63 | 0 | 108 | 0 | 54 |
| 25 | 19 | 2 | 76 | 1 | 0 | 66,22 | 50 | 0 | 31 | 47 | 246 | 0 | 32 | 24 | 1 | 2 | 36 | 0 | 152 | 0 | 54 |
| 26 | 16 | 0 | 41 | 2 | 0 | 39,86 | 89 | 0 | 18 | 57 | 150 | 1 | 20 | 17 | 0 | 0 | 34 | 0 | 112 | 0 | 0 |
| 27 | 11 | 0 | 45 | 3 | 0 | 39,86 | 89 | 0 | 30 | 30 | 150 | 0 | 20 | 16 | 0 | 1 | 39 | 0 | 107 | 0 | 0 |
| 28 | 8 | 0 | 66 | 8 | 0 | 55,41 | 66 | 0 | 52 | 29 | 184 | 0 | 16 | 12 | 0 | 1 | 19 | 0 | 109 | 0 | 52 |
| 29 | 9 | 0 | 42 | 8 | 0 | 39,86 | 89 | 0 | 10 | 33 | 130 | 0 | 12 | 8 | 0 | 0 | 8 | 0 | 66 | 0 | 52 |
| 30 | 7 | 0 | 22 | 0 | 0 | 19,59 | 119 | 0 | 10 | 40 | 76 | 0 | 10 | 7 | 0 | 2 | 10 | 0 | 62 | 0 | 0 |
| 31 | 6 | 0 | 49 | 0 | 0 | 37,16 | 93 | 0 | 31 | 5 | 134 | 0 | 13 | 9 | 0 | 2 | 18 | 0 | 62 | 0 | 50 |
| 32 | 1245 | 57 | 2152 | 165 | 2 | 79,47 | 942 | 0 | 1344 | 1342 | 7461 | 6 | 453 | 350 | 2 | 21 | 1038 | 0 | 3475 | 0 | 2396 |

Pulse la tecla Enter

Excel nombre / name
hot041c9



Booking y Planning

.1.C.6. Previsión de Ocupación. Modelo C.N.

16 PREVISION OCUPACION MODELO C.N.

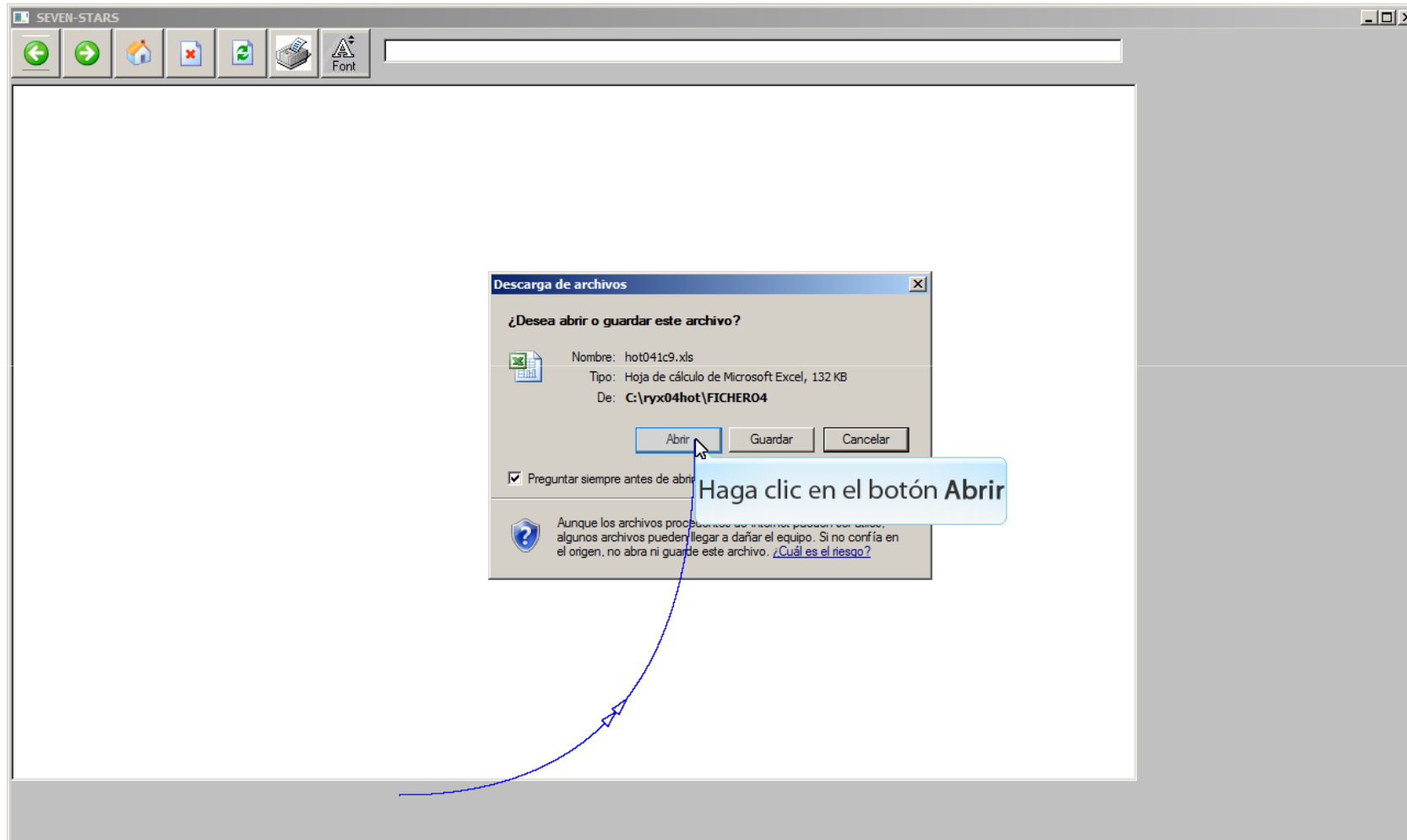
| | ED.. | JS.. | SD.. | SM.. | EM.. | %Ocup. | Disp. | BLOQ | Entr. | Sal. | Pax.. | Pext | Men1 | Men2 | Men3 | Cuna | AD.. | ALLI | H... | MA.. | MC.. |
|----|------|------|------|------|------|--------|-------|------|-------|------|-------|------|------|------|------|------|------|------|------|------|------|
| 1 | 39 | 2 | 11 | 1 | 1 | 38,51 | 91 | 0 | 16 | 12 | 98 | 0 | 2 | 1 | 0 | 3 | 18 | 0 | 60 | 0 | 14 |
| 2 | 36 | 2 | 65 | 7 | 0 | 75,00 | 37 | 0 | 70 | 16 | 223 | 0 | 15 | 11 | 0 | 1 | 21 | 0 | 115 | 0 | 83 |
| 3 | 36 | 2 | 84 | 7 | 0 | 87,84 | 18 | 0 | 38 | 19 | 265 | 0 | 18 | 13 | 0 | 1 | 22 | 0 | 122 | 0 | 117 |
| 4 | 37 | 2 | 117 | 5 | 0 | 109,46 | -14 | 0 | 58 | 26 | 321 | 0 | 14 | 9 | 0 | 1 | 64 | 0 | 103 | 0 | 150 |
| 5 | 33 | 2 | 67 | 10 | 0 | 76,35 | 35 | 0 | 36 | 85 | 219 | 0 | 11 | 7 | 0 | 1 | 22 | 0 | 81 | 0 | 112 |
| 6 | 26 | 2 | 153 | 9 | 0 | 129,05 | -43 | 0 | 127 | 49 | 361 | 0 | 2 | 0 | 0 | 0 | 48 | 0 | 191 | 0 | 118 |
| 7 | 112 | 3 | 50 | 2 | 0 | 113,51 | -20 | 0 | 103 | 126 | 312 | 0 | 5 | 3 | 0 | 0 | 24 | 0 | 68 | 0 | 216 |
| 8 | 97 | 2 | 39 | 1 | 0 | 94,59 | 8 | 0 | 8 | 36 | 256 | 0 | 4 | 3 | 0 | 0 | 22 | 0 | 51 | 0 | 179 |
| 9 | 99 | 2 | 16 | 1 | 0 | 80,41 | 29 | 0 | 11 | 32 | 221 | 0 | 8 | 7 | 0 | 0 | 23 | 0 | 71 | 0 | 123 |
| 10 | 98 | 2 | 47 | 7 | 0 | 104,73 | -7 | 0 | 45 | 9 | 298 | 0 | 14 | 14 | 0 | 0 | 21 | 0 | 101 | 0 | 172 |
| 11 | 34 | 2 | 71 | 15 | 0 | 83,11 | 25 | 0 | 41 | 73 | 251 | 0 | 19 | 15 | 0 | 0 | 26 | 0 | 110 | 0 | 111 |
| 12 | 30 | 2 | 57 | 9 | 0 | 66,89 | 49 | 0 | 18 | 42 | 204 | 1 | 16 | 13 | 0 | 1 | 32 | 0 | 106 | 0 | 62 |
| 13 | 34 | 2 | 49 | 1 | 0 | 58,78 | 61 | 0 | 31 | 43 | 201 | 2 | 23 | 17 | 0 | 1 | 39 | 0 | 148 | 0 | 10 |
| 14 | 41 | 2 | 101 | 9 | 0 | 104,05 | -6 | 0 | 87 | 20 | 317 | 2 | 19 | 14 | 0 | 2 | 46 | 0 | 149 | 0 | 118 |
| 15 | 40 | 2 | 99 | 9 | 0 | 102,03 | -3 | 0 | 31 | 34 | 304 | 0 | 15 | 12 | 0 | 1 | 40 | 0 | 142 | 0 | 118 |
| 16 | 41 | 2 | 59 | 1 | 0 | 70,27 | 44 | 0 | 34 | 81 | 225 | 0 | 17 | 15 | 0 | 0 | 37 | 0 | 136 | 0 | 46 |
| 17 | 46 | 2 | 88 | 5 | 0 | 95,95 | 6 | 0 | 49 | 11 | 304 | 0 | 22 | 18 | 0 | 0 | 35 | 0 | 164 | 0 | 101 |
| 18 | 48 | 2 | 79 | 5 | 0 | 91,22 | 13 | 0 | 39 | 46 | 287 | 0 | 19 | 17 | 0 | 0 | 28 | 0 | 140 | 0 | 65 |
| 19 | 44 | 2 | 81 | 2 | 0 | 87,84 | 18 | 0 | 41 | 46 | 273 | 0 | 15 | 14 | 0 | 0 | 22 | 0 | 131 | 0 | 66 |
| 20 | 47 | 2 | 80 | 2 | 0 | 89,19 | 16 | 0 | 74 | 72 | 263 | 0 | 12 | 9 | 0 | 0 | 32 | 0 | 139 | 0 | 20 |
| 21 | 51 | 3 | 116 | 6 | 1 | 120,27 | -30 | 0 | 63 | 17 | 348 | 0 | 11 | 7 | 0 | 1 | 72 | 0 | 151 | 0 | 51 |
| 22 | 45 | 2 | 105 | 14 | 0 | 112,84 | -19 | 0 | 36 | 47 | 328 | 0 | 8 | 6 | 0 | 0 | 62 | 0 | 93 | 0 | 41 |
| 23 | 41 | 4 | 83 | 14 | 0 | 96,62 | 5 | 0 | 43 | 67 | 283 | 0 | 18 | 15 | 0 | 0 | 55 | 0 | 123 | 0 | 41 |
| 24 | 14 | 5 | 94 | 1 | 0 | 77,03 | 34 | 0 | 63 | 92 | 229 | 0 | 23 | 17 | 1 | 0 | 63 | 0 | 108 | 0 | 54 |
| 25 | 19 | 2 | 76 | 1 | 0 | 66,22 | 50 | 0 | 31 | 47 | 246 | 0 | 32 | 24 | 1 | 2 | 36 | 0 | 152 | 0 | 54 |
| 26 | 16 | 0 | 41 | 2 | 0 | 39,86 | 89 | 0 | 18 | 57 | 150 | 1 | 20 | 17 | 0 | 0 | 34 | 0 | 112 | 0 | 0 |
| 27 | 11 | 0 | 45 | 3 | 0 | 39,86 | 89 | 0 | 30 | 30 | 150 | 0 | 20 | 16 | 0 | 1 | 39 | 0 | 107 | 0 | 0 |
| 28 | 8 | 0 | 66 | 8 | 0 | 55,41 | 66 | 0 | 52 | 29 | 184 | 0 | 16 | 12 | 0 | 1 | 19 | 0 | 109 | 0 | 52 |
| 29 | 9 | 0 | 42 | 8 | 0 | 39,86 | 89 | 0 | 10 | 33 | 130 | 0 | 12 | 8 | 0 | 0 | 8 | 0 | 66 | 0 | 52 |
| 30 | 7 | 0 | 22 | 0 | 0 | 19,59 | 119 | 0 | 10 | 40 | 76 | 0 | 10 | 7 | 0 | 2 | 10 | 0 | 62 | 0 | 0 |
| 31 | 6 | 0 | 49 | 0 | 0 | 37,16 | 93 | 0 | 21 | 5 | 134 | 0 | 13 | 9 | 0 | 2 | 18 | 0 | 62 | 0 | 50 |
| 32 | 1245 | 57 | 2152 | 165 | 2 | 79,47 | 942 | 0 | 1344 | 1342 | 7461 | 6 | 453 | 350 | 2 | 21 | 1038 | 0 | 3475 | 0 | 2396 |

Haga clic en el botón

Booking y Planning



.1.C.6. Previsión de Ocupación. Modelo C.N.



Booking y Planning



.1.C.6. Previsión de Ocupación. Modelo C.N.

SEVEN-STARS

file:///C:/ryx04hot/FICHERO4/hot041c9.xls

| A1 | Fecha... | | | | | | | | | | | | |
|----|------------|-------|-------|-------|-------|-------|-------|-------|--------|--------|------|----|--|
| | A | B | C | D | E | F | G | H | I | J | K | L | |
| 1 | Fecha... | Habit | DD... | ED... | JS... | SD... | SM... | EM... | %Ocup. | Disp. | BLOQ | En | |
| 2 | 04/07/2010 | Dom | 57 | 3 | 39 | 2 | 11 | 1 | 1 | 38,51 | 91 | 0 | |
| 3 | 05/07/2010 | Lun | 111 | 1 | 36 | 2 | 65 | 7 | 0 | 75 | 37 | 0 | |
| 4 | 06/07/2010 | Mar | 130 | 1 | 36 | 2 | 84 | 7 | 0 | 87,84 | 18 | 0 | |
| 5 | 07/07/2010 | Mie | 162 | 1 | 37 | 2 | 117 | 5 | 0 | 109,46 | -14 | 0 | |
| 6 | 08/07/2010 | Jue | 113 | 1 | 33 | 2 | 67 | 10 | 0 | 76,35 | 35 | 0 | |
| 7 | 09/07/2010 | Vie | 191 | 1 | 26 | 2 | 153 | 9 | 0 | 129,05 | -43 | 0 | |
| 8 | 10/07/2010 | Sab | 168 | 1 | 112 | 3 | 50 | 2 | 0 | 113,51 | -20 | 0 | |
| 9 | 11/07/2010 | Dom | 140 | 1 | 97 | 2 | 39 | 1 | 0 | 94,59 | 8 | 0 | |
| 10 | 12/07/2010 | Lun | 119 | 1 | 99 | 2 | 16 | 1 | 0 | 80,41 | 29 | 0 | |
| 11 | 13/07/2010 | Mar | 155 | 1 | 98 | 2 | 47 | 7 | 0 | 104,73 | -7 | 0 | |
| 12 | 14/07/2010 | Mie | 123 | 1 | 34 | 2 | 71 | 15 | 0 | 83,11 | 25 | 0 | |
| 13 | 15/07/2010 | Jue | 99 | 1 | 30 | 2 | 57 | 9 | 0 | 66,89 | 49 | 0 | |
| 14 | 16/07/2010 | Vie | 87 | 1 | 34 | 2 | 49 | 1 | 0 | 58,78 | 61 | 0 | |
| 15 | 17/07/2010 | Sab | 154 | 1 | 41 | 2 | 101 | 9 | 0 | 104,05 | -6 | 0 | |
| 16 | 18/07/2010 | Dom | 151 | 1 | 40 | 2 | 99 | 9 | 0 | 102,03 | -3 | 0 | |
| 17 | 19/07/2010 | Lun | 104 | 1 | 41 | 2 | 59 | 1 | 0 | 70,27 | 44 | 0 | |
| 18 | 20/07/2010 | Mar | 142 | 1 | 46 | 2 | 88 | 5 | 0 | 95,95 | 6 | 0 | |
| 19 | 21/07/2010 | Mie | 135 | 1 | 48 | 2 | 79 | 5 | 0 | 91,22 | 13 | 0 | |
| 20 | 22/07/2010 | Jue | 130 | 1 | 44 | 2 | 81 | 2 | 0 | 87,84 | 18 | 0 | |
| 21 | 23/07/2010 | Vie | 132 | 1 | 47 | 2 | 80 | 2 | 0 | 89,19 | 16 | 0 | |
| 22 | 24/07/2010 | Sab | 178 | 1 | 51 | 3 | 116 | 6 | 1 | 120,27 | -30 | 0 | |
| 23 | 25/07/2010 | Dom | 167 | 1 | 45 | 2 | 105 | 14 | 0 | 112,84 | -19 | 0 | |
| 24 | 26/07/2010 | Lun | 143 | 1 | 41 | 4 | 83 | 14 | 0 | 96,62 | 5 | 0 | |
| 25 | 27/07/2010 | Mar | 114 | 0 | 14 | 5 | 94 | 1 | 0 | 77,03 | 34 | 0 | |
| 26 | 28/07/2010 | Mie | 98 | 0 | 19 | 2 | 76 | 1 | 0 | 66,22 | 50 | 0 | |
| 27 | 29/07/2010 | Jue | 59 | 0 | 16 | 0 | 41 | 2 | 0 | 39,86 | 89 | 0 | |
| 28 | 30/07/2010 | Vie | 59 | 0 | 11 | 0 | 45 | 3 | 0 | 39,86 | 89 | 0 | |
| 29 | 31/07/2010 | Sab | 82 | 0 | 8 | 0 | 66 | 8 | 0 | 55,41 | 66 | 0 | |
| 30 | 01/08/2010 | Dom | 59 | 0 | 9 | 0 | 42 | 8 | 0 | 39,86 | 89 | 0 | |
| 31 | 02/08/2010 | Lun | 29 | 0 | 7 | 0 | 22 | 0 | 0 | 19,59 | 119 | 0 | |
| 32 | 03/08/2010 | Mar | 55 | 0 | 6 | 0 | 49 | 0 | 0 | 37,16 | 93 | 0 | |
| 33 | TOTALES: | | 3646 | 25 | 1245 | 57 | 2152 | 165 | 2 | 79,47 | 942 | 0 | |
| 34 | | | | | | | | | | | | | |

hot041c9

Booking y Planning

.1.C.6. Previsión de Ocupación. Modelo C.N.

SEVEN-STARS

file:///C:/ryx04hot/FICHERO4/hot041c9.xls

Haga clic en el botón Cerrar

| | A | B | C | D | E | F | G | H | I | J | K | L | En |
|----|------------|-----|-------|------|------|------|------|------|------|--------|-------|------|----|
| 1 | Fecha.. | | Habit | DD.. | ED.. | JS.. | SD.. | SM.. | EM.. | %Ocup. | Disp. | BLOQ | |
| 2 | 04/07/2010 | Dom | 57 | 3 | 39 | 2 | 11 | 1 | 1 | 38,51 | 91 | 0 | |
| 3 | 05/07/2010 | Lun | 111 | 1 | 36 | 2 | 65 | 7 | 0 | 75 | 37 | 0 | |
| 4 | 06/07/2010 | Mar | 130 | 1 | 36 | 2 | 84 | 7 | 0 | 87,84 | 18 | 0 | |
| 5 | 07/07/2010 | Mie | 162 | 1 | 37 | 2 | 117 | 5 | 0 | 109,46 | -14 | 0 | |
| 6 | 08/07/2010 | Jue | 113 | 1 | 33 | 2 | 67 | 10 | 0 | 76,35 | 35 | 0 | |
| 7 | 09/07/2010 | Vie | 191 | 1 | 26 | 2 | 153 | 9 | 0 | 129,05 | -43 | 0 | |
| 8 | 10/07/2010 | Sab | 168 | 1 | 112 | 3 | 50 | 2 | 0 | 113,51 | -20 | 0 | |
| 9 | 11/07/2010 | Dom | 140 | 1 | 97 | 2 | 39 | 1 | 0 | 94,59 | 8 | 0 | |
| 10 | 12/07/2010 | Lun | 119 | 1 | 99 | 2 | 16 | 1 | 0 | 80,41 | 29 | 0 | |
| 11 | 13/07/2010 | Mar | 155 | 1 | 98 | 2 | 47 | 7 | 0 | 104,73 | -7 | 0 | |
| 12 | 14/07/2010 | Mie | 123 | 1 | 34 | 2 | 71 | 15 | 0 | 83,11 | 25 | 0 | |
| 13 | 15/07/2010 | Jue | 99 | 1 | 30 | 2 | 57 | 9 | 0 | 66,89 | 49 | 0 | |
| 14 | 16/07/2010 | Vie | 87 | 1 | 34 | 2 | 49 | 1 | 0 | 58,78 | 61 | 0 | |
| 15 | 17/07/2010 | Sab | 154 | 1 | 41 | 2 | 101 | 9 | 0 | 104,05 | -6 | 0 | |
| 16 | 18/07/2010 | Dom | 151 | 1 | 40 | 2 | 99 | 9 | 0 | 102,03 | 3 | 0 | |
| 17 | 19/07/2010 | Lun | 104 | 1 | 41 | 2 | 59 | 1 | 0 | 70,27 | 44 | 0 | |
| 18 | 20/07/2010 | Mar | 142 | 1 | 46 | 2 | 88 | 5 | 0 | 95,95 | 6 | 0 | |
| 19 | 21/07/2010 | Mie | 135 | 1 | 48 | 2 | 79 | 5 | 0 | 91,22 | 13 | 0 | |
| 20 | 22/07/2010 | Jue | 130 | 1 | 44 | 2 | 81 | 2 | 0 | 87,84 | 18 | 0 | |
| 21 | 23/07/2010 | Vie | 132 | 1 | 47 | 2 | 80 | 2 | 0 | 89,19 | 16 | 0 | |
| 22 | 24/07/2010 | Sab | 178 | 1 | 51 | 3 | 116 | 6 | 1 | 120,27 | -30 | 0 | |
| 23 | 25/07/2010 | Dom | 167 | 1 | 45 | 2 | 105 | 14 | 0 | 112,84 | -19 | 0 | |
| 24 | 26/07/2010 | Lun | 143 | 1 | 41 | 4 | 83 | 14 | 0 | 96,62 | 5 | 0 | |
| 25 | 27/07/2010 | Mar | 114 | 0 | 14 | 5 | 94 | 1 | 0 | 77,03 | 34 | 0 | |
| 26 | 28/07/2010 | Mie | 98 | 0 | 19 | 2 | 76 | 1 | 0 | 66,22 | 50 | 0 | |
| 27 | 29/07/2010 | Jue | 59 | 0 | 16 | 0 | 41 | 2 | 0 | 39,86 | 89 | 0 | |
| 28 | 30/07/2010 | Vie | 59 | 0 | 11 | 0 | 45 | 3 | 0 | 39,86 | 89 | 0 | |
| 29 | 31/07/2010 | Sab | 82 | 0 | 8 | 0 | 66 | 8 | 0 | 55,41 | 66 | 0 | |
| 30 | 01/08/2010 | Dom | 59 | 0 | 9 | 0 | 42 | 8 | 0 | 39,86 | 89 | 0 | |
| 31 | 02/08/2010 | Lun | 29 | 0 | 7 | 0 | 22 | 0 | 0 | 19,59 | 119 | 0 | |
| 32 | 03/08/2010 | Mar | 55 | 0 | 6 | 0 | 49 | 0 | 0 | 37,16 | 93 | 0 | |
| 33 | TOTALES: | | 3646 | 25 | 1245 | 57 | 2152 | 165 | 2 | 79,47 | 942 | 0 | |
| 34 | | | | | | | | | | | | | |



Disclaimer

El presente informe/documento es estrictamente confidencial y de uso interno de la Sociedad, y no podrá ser entregado, ni permitirse el acceso a terceros o hacer referencia al mismo en comunicaciones sin nuestro consentimiento previo por escrito.

Este documento ha sido preparado con fines exclusivamente informativos (nunca con carácter contractual) y refleja una serie de observaciones de carácter general sobre Class One.

Class One no acepta ningún tipo de responsabilidad frente a la Sociedad ni frente a ningún tercero como consecuencia de las decisiones o acciones que pueden ser adoptadas por la Sociedad basándose en el contenido de este documento.

En caso de contradicción o conflicto entre la versión electrónica y el documento físico, prevalecerá el documento físico.